



Government of **Western Australia**
Department of **Water and Environmental Regulation**

Environmental Regulation Reform

A strategic review of regulatory delivery and fees for
industry regulation

Ed Schuller

September 2022

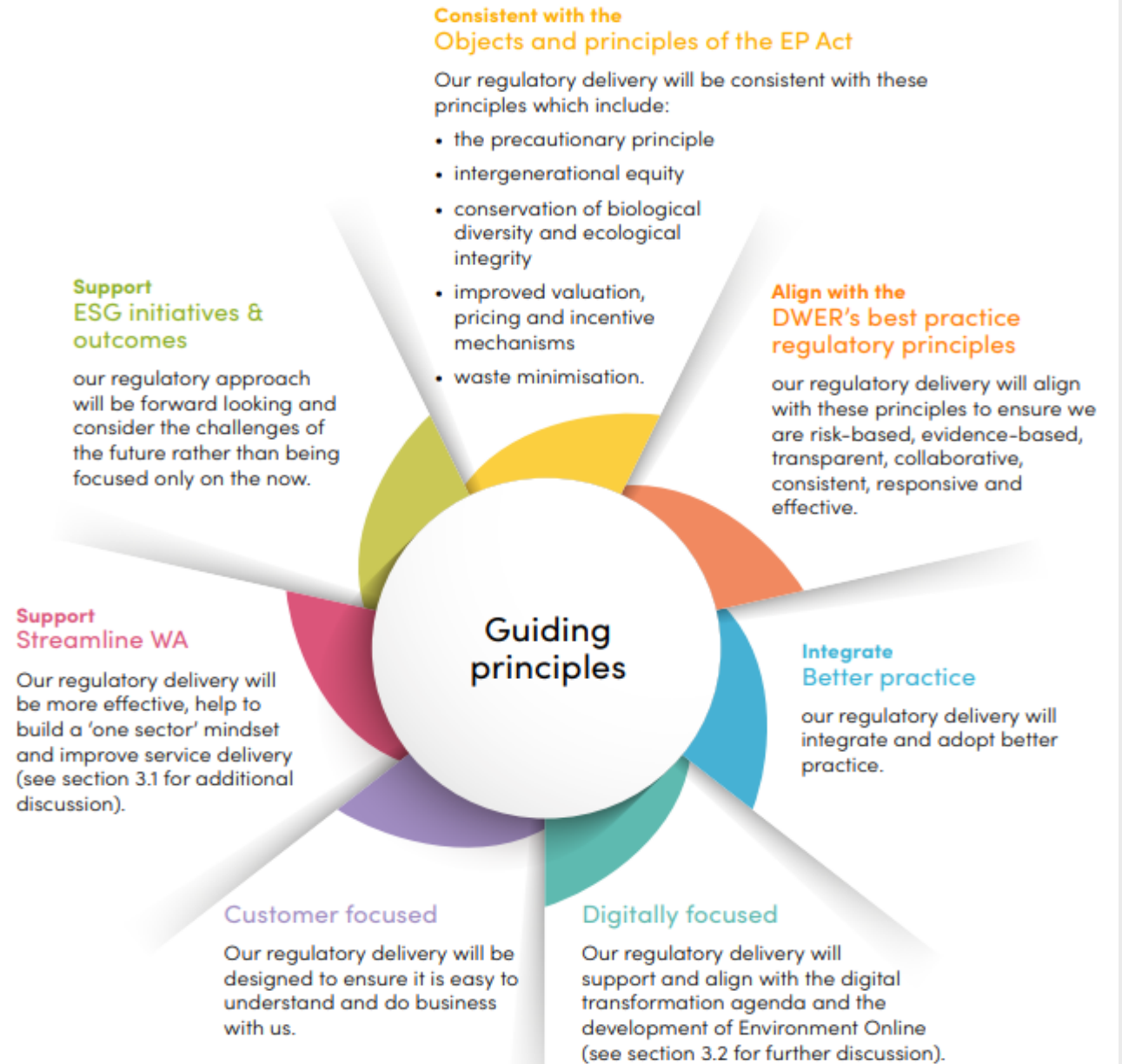


Reform Context

- Environmental Protection Act Amendments
- Environment Online
- Streamline WA
- Strategic Plan 2022—2026

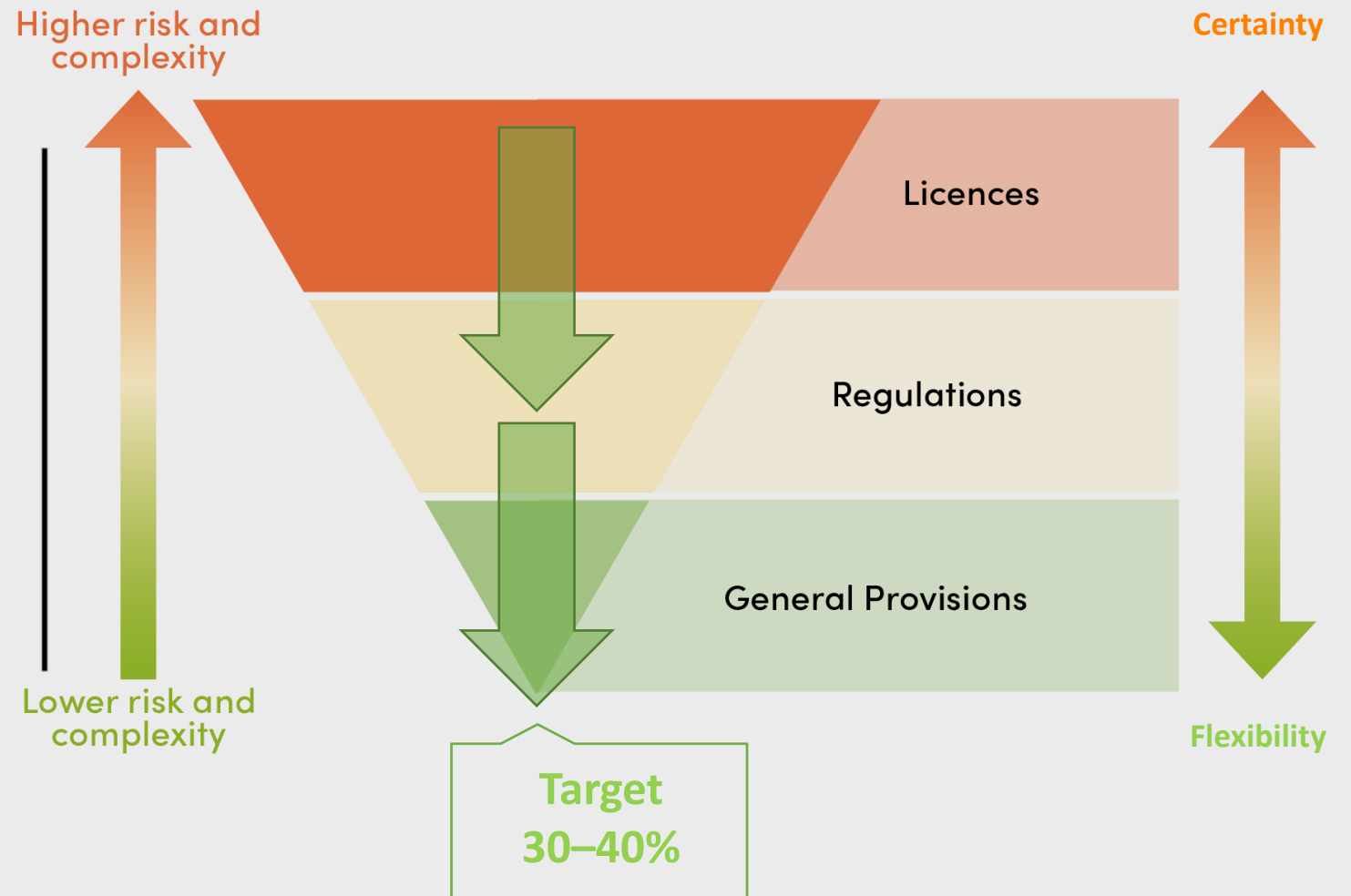
Future vision Prescribed activities Fee model

Principles Summary



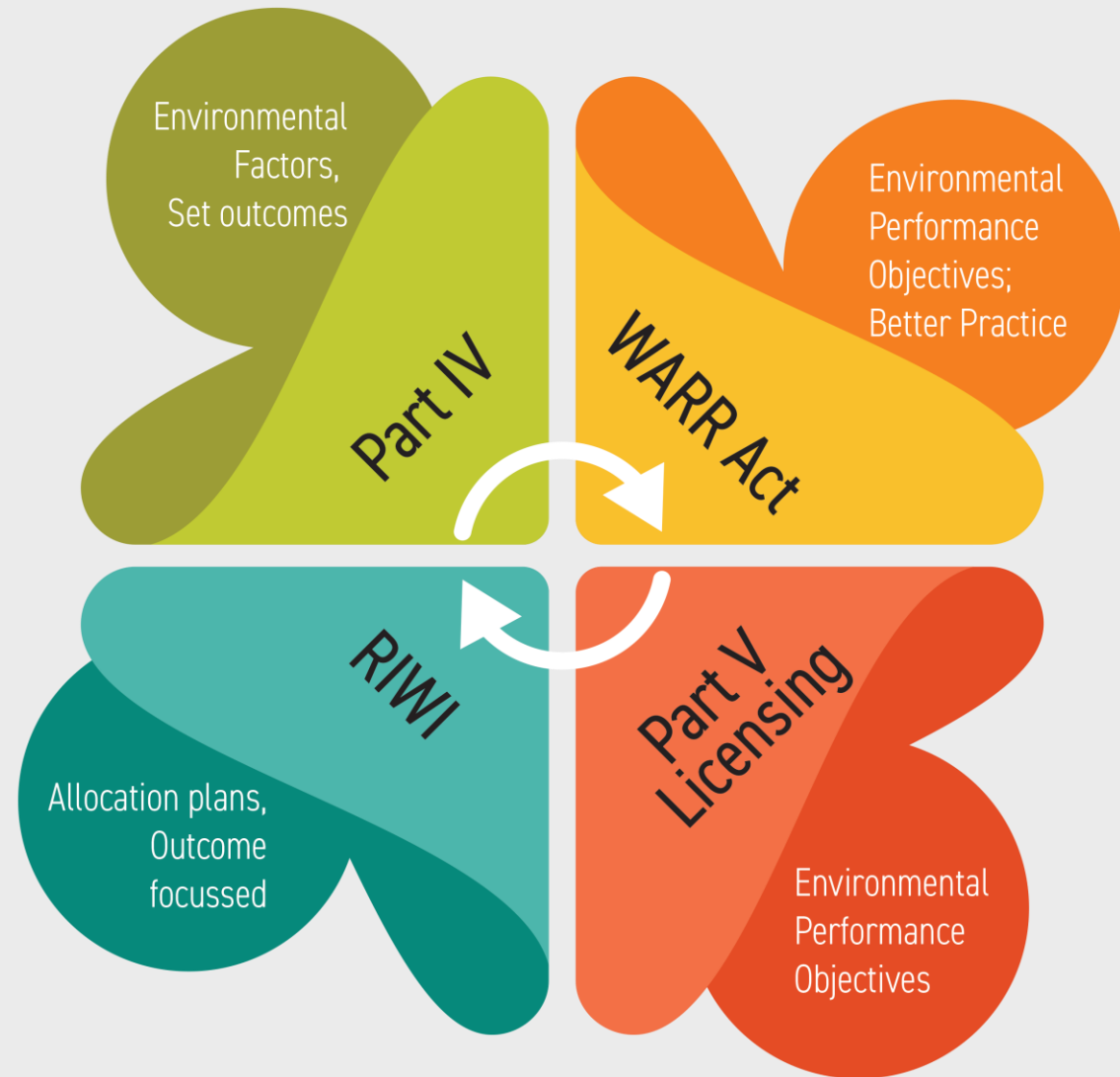
Future vision

Guiding Principles



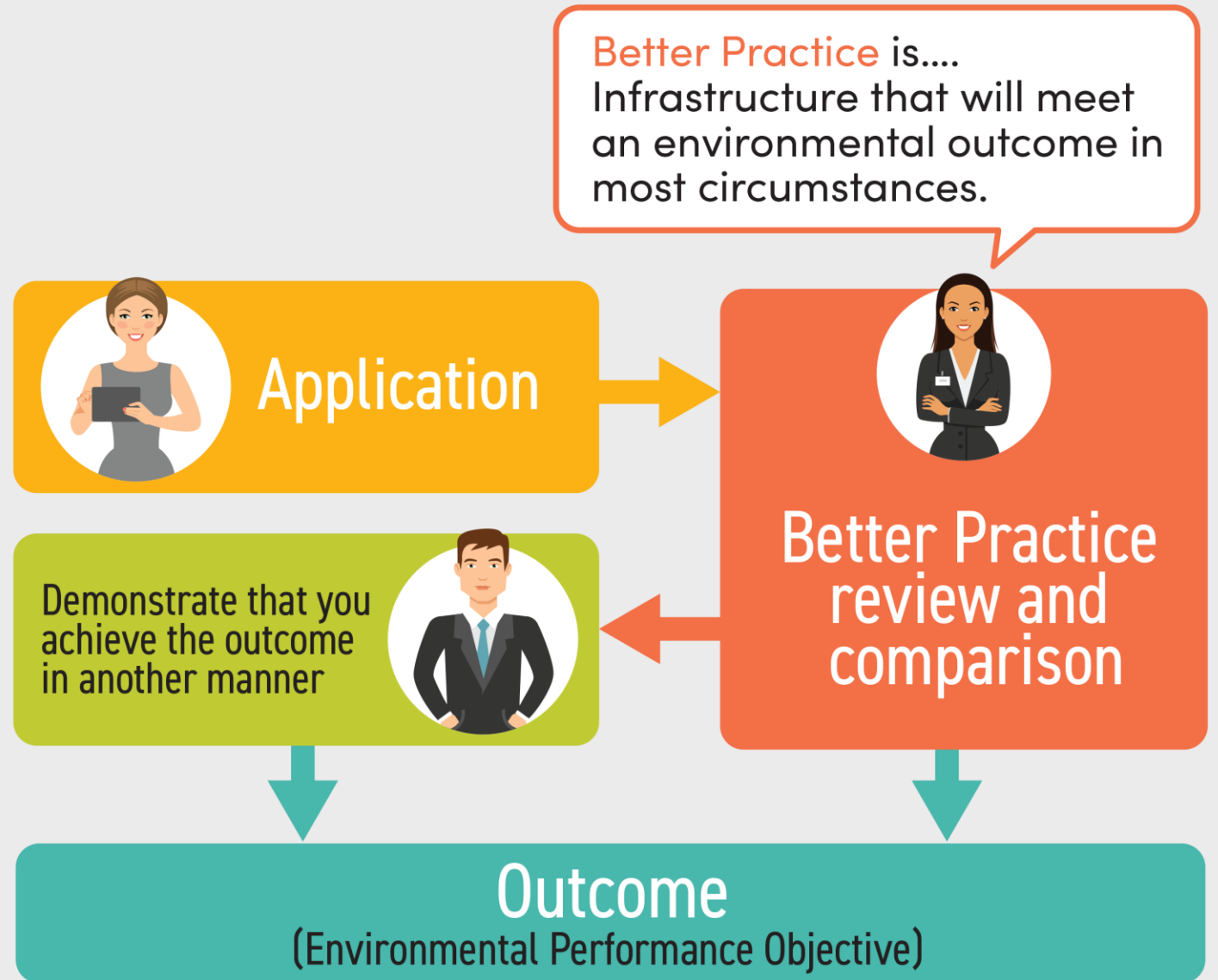
Future vision

Outcome Focus

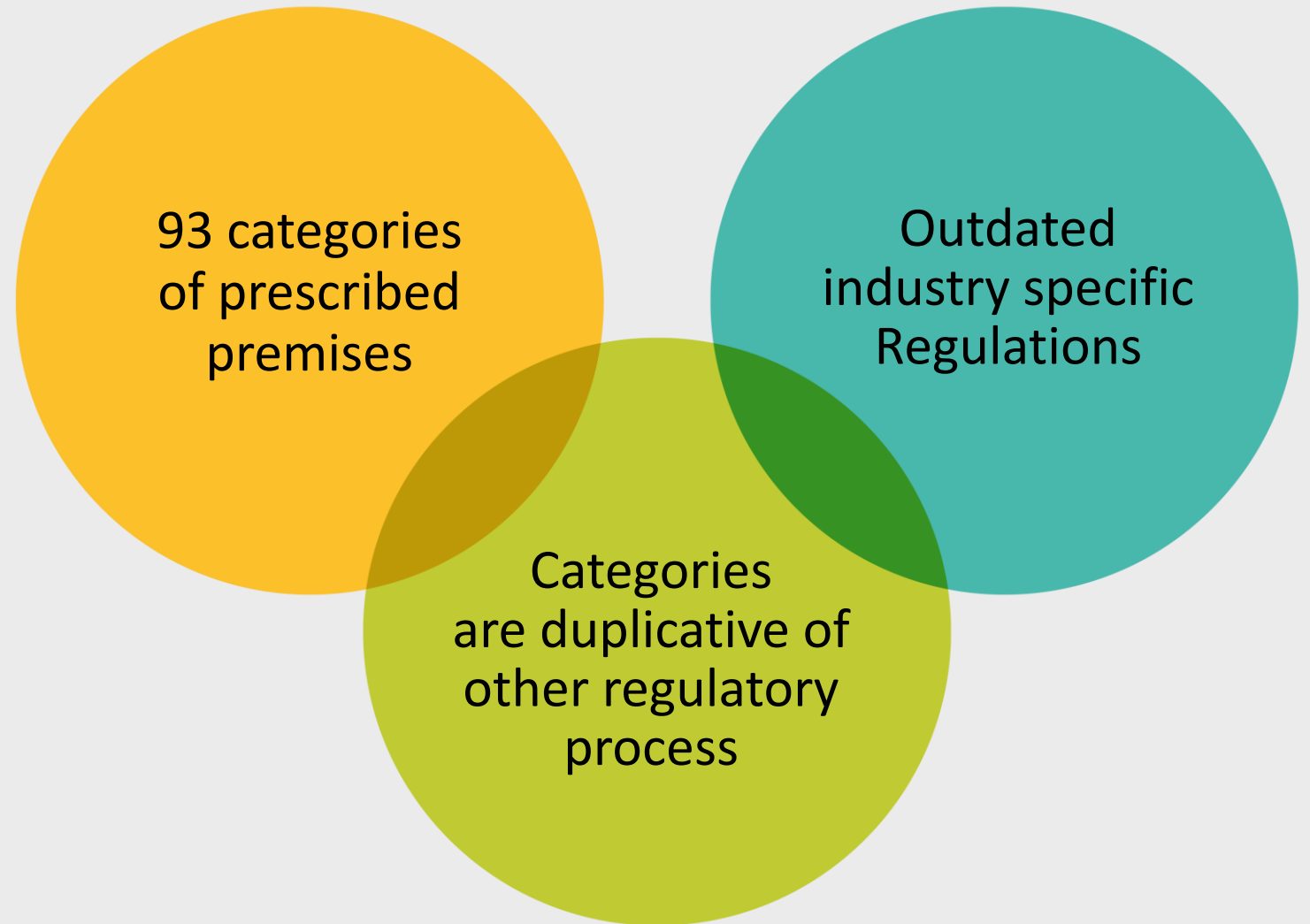


Future vision

Better Practice



Prescribed Activities Context



Prescribed Activities

Streamline



Energy and
combustion
activities



Intensive
livestock
keeping, animal
and plant
processing



Manufacturing
activities



Mineral
production
and
processing



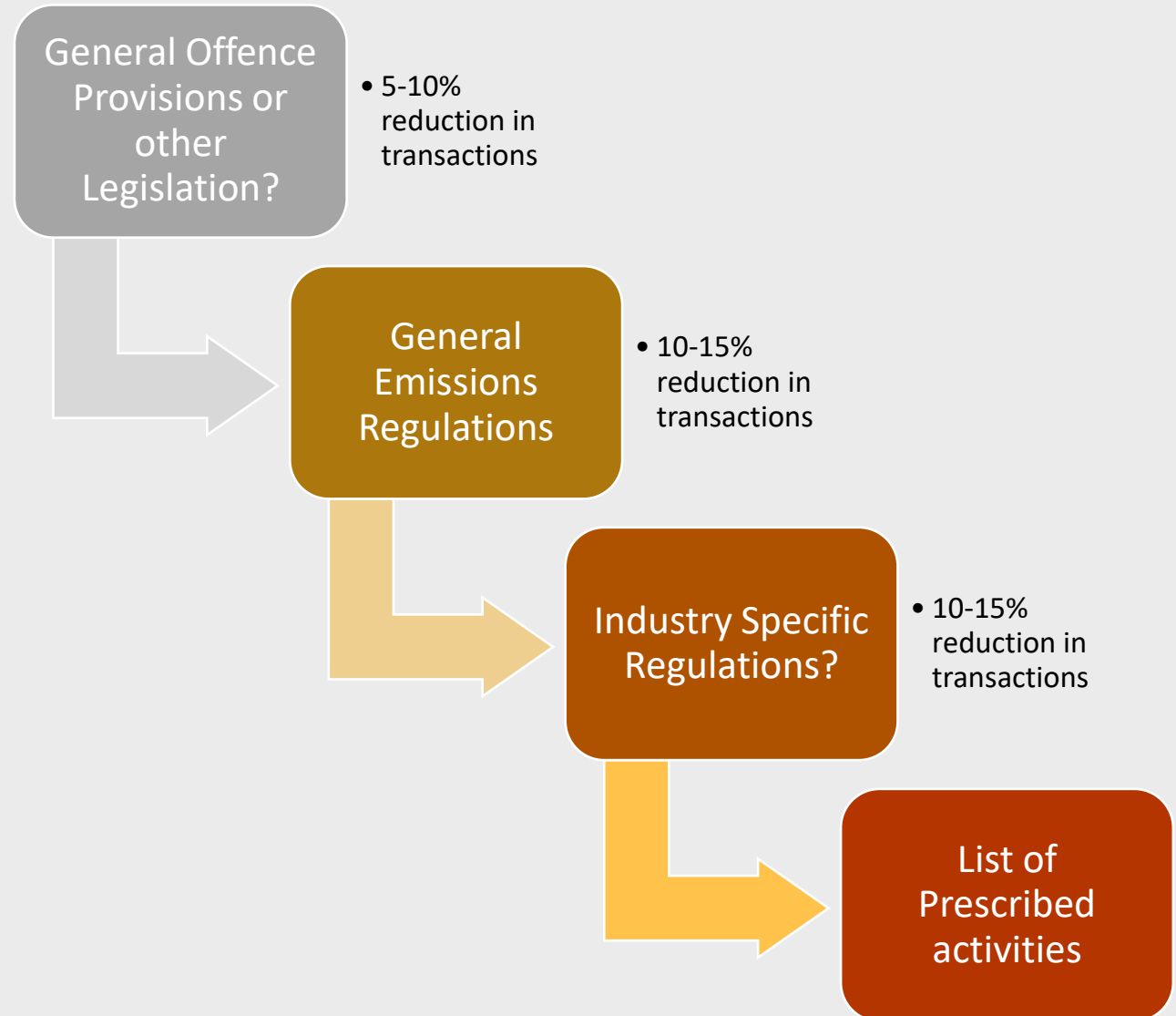
Resource
recovery, waste
treatment and
disposal



Transport and
maritime
services

Prescribed Activities

Transition of low-risk activities



Prescribed Activities

Regulatory overlap

- Tailings storage facilities & mining operations
 - EP Act, RIWI Act, Mining Act
- Sewage Treatment
 - EP Act, Health (Miscellaneous Provisions) Act
- Local Government
 - Noxious Industries

Prescribed Activities

Contemporary Regulation



Battery
Industries



Intensive
Animal
Industries



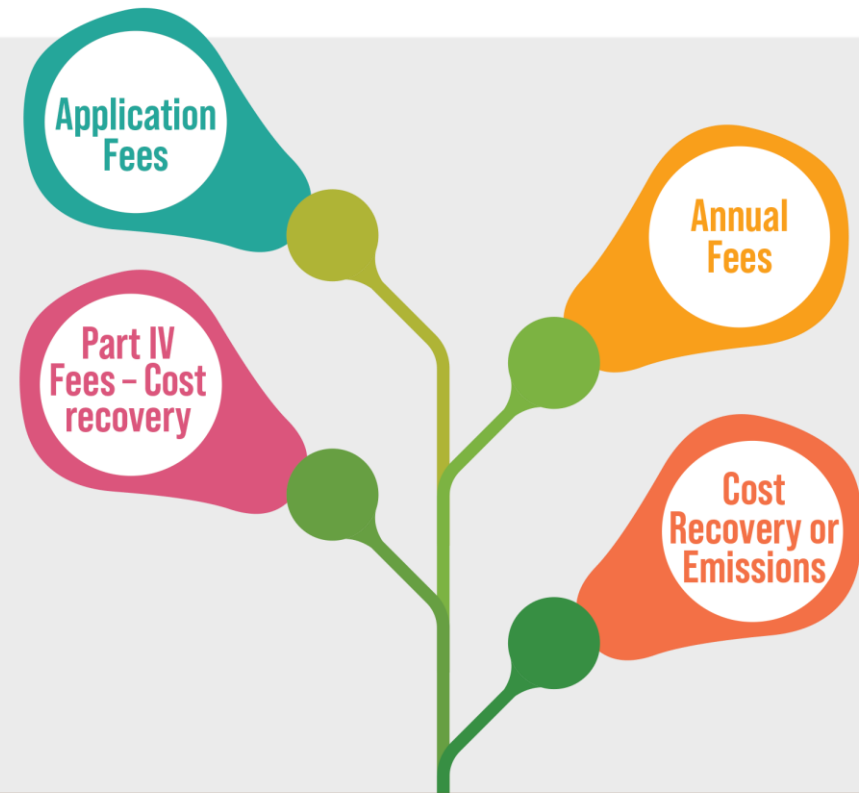
Greenhouse
Gas Emissions



General
emissions and
discharges

Fee model

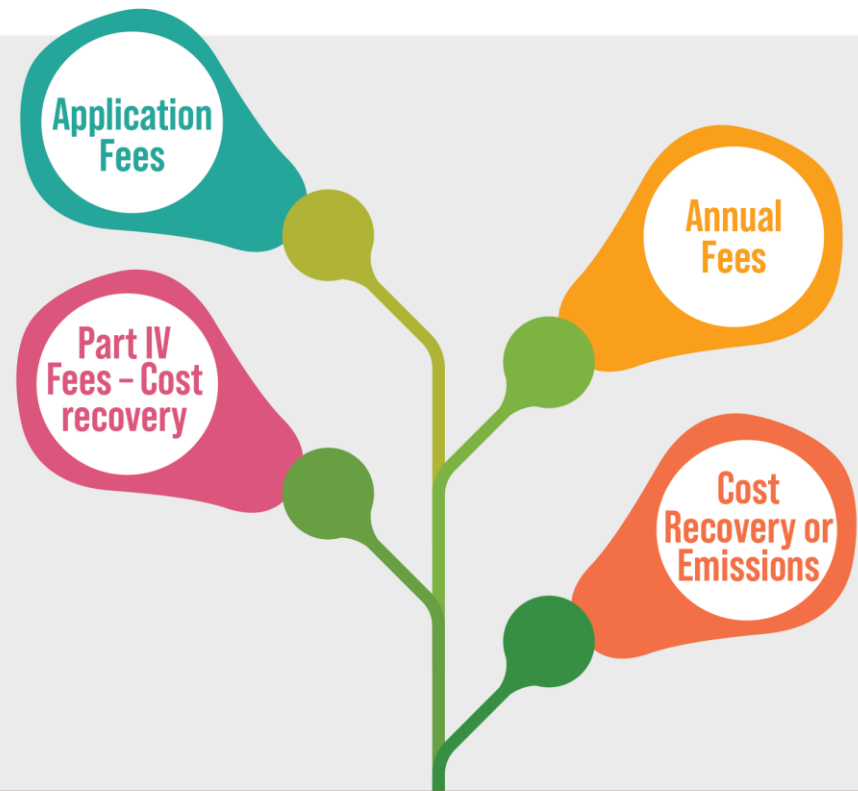
Process based design
principles



- Consistent & repeatable
- Transparent
- Practical and efficient
- Aligned with Legislation

Fee model

Policy based design principles



- Cost Recovery
- Reflective of effort
- Responsive
- Polluter pays
- Waste minimisation

Timing & Phasing

Summary

- Consultation for 12 weeks
- Closing date for submissions is 13 December 2022
- Exposure draft of amended EP Regulation
- 6 week consultation period in 2023

Have your say

Summary

- Online information sessions
- Online survey & materials
- Make a written submission



Thank you
Any questions?

